



## **EPS MEETING DATES AND LOCATION TO CHANGE!**

In order to make the general membership meetings more FUN and entertaining, we will be changing the frequency, dates, and locations of our future meetings!

The new meeting format will include a short program and very brief business announcements.

Business will be conducted at meetings held separately by the Executive Committee and Committee Chairs. Any matter requiring a vote of the membership will be brought up at the next general membership meeting.

This is the way EPS functioned in its early days when business matters were simple! Now that we have a museum, park and historic home, we have outgrown the "simple ways" and need to be run more like a small corporation!

This should make the general membership meetings more *informative and entertaining!*

We will let everyone know once the new schedule is in place.

## **BAKE SALE**

*Warm up those ovens!  
Our annual **Bake Sale**  
fundraiser will be  
**Sunday, November 13<sup>th</sup>**  
at Pace-Stone!*

*If you would like to contribute  
baked goods, contact  
Committee Co-Chairs  
Jean Harrington  
at 623-2225 or  
Pam Archer at 623-2348.*

*Thank you to all the  
volunteers who helped to  
make the tour of the  
Burton Farm a successful  
fundraiser! We could not  
operate without our  
wonderful volunteers!!!!*

**EPS volunteers are the BEST!!**

## **Christmas Tour of Homes**

**Mark your calendars for  
the always popular  
Tour of Homes,  
Sunday, December 4<sup>th</sup>!**

**The locations are still  
being finalized, but as  
usual, there will be a great  
variety of homes to see!**

**Tickets will be for sale in  
November at the Eden  
Historical Museum and  
from EPS members.**

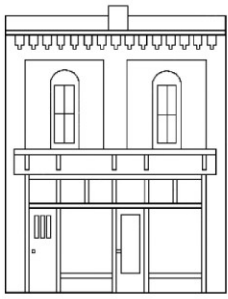
**Call 623-0773 or email us  
to reserve your tickets!**

## **Governor Morehead Park in Spray**

**This historic and picturesque park is our hidden jewel! It's  
available for your enjoyment at any time of year.**

**You may also reserve the site for your special event  
for a small fee.**

**For more information, contact the Park Committee Co-Chairs:  
Vivian Phillips @ 627-0816 [bvphillips71@gmail.com](mailto:bvphillips71@gmail.com)  
or Louise Price @ 623-1043 [lwprice@embarqmail.com](mailto:lwprice@embarqmail.com)**



# EDEN HISTORICAL MUSEUM

An initiative of the Eden Preservation Society

## LADIES NIGHT OUT GOES GREEN

The **Eden Historical Museum** will be participating in the Olde Leaksville Merchants Association's **LADIES NIGHT OUT GOES GREEN** on Friday, October 14th from 6:00-7:30.

**Wear GREEN or bring newspapers to recycle and GET FREE ADMISSION to the museum!**

Downtown merchants will also serve as drop-off points for other recyclables. See the [Oct. 12<sup>th</sup> Eden News](#) for more info.

Get a ticket in exchange for your recyclables and the first 50 tickets turned in at A Stitch in Time/The Sign Shop get a free t-shirt!

## Museum Updates:

- The batteau pole that was found in the Dan River last year by Jeff and Jo-Lynn Overby has been conserved by the Underwater Archaeology Branch of the NC Archives and is coming back to Eden this month! It will be on display at the Eden Historical Museum soon afterwards.
- The Museum supplied Wells Fargo with historic photos of Eden for a mural that has been installed at the Wachovia bank on Van Buren Rd. (which will soon become a Wells Fargo branch).
- Museum Outreach Programs have included taking the Francis Photo Albums to Arbor Ridge for the residents to browse through and reminisce!

## SOME Recent Donations

Carillon from Morehead High School – Larry Helms

WWII Navy hat, vintage textile books, etc. – Ann Bradford

Panoramic WWII photographs – Susan Carter

Collection of Mill Whistle newspapers – Jean Weddle and Lou Trollinger

Drum majors hat and wooden baton from early mill band that had belonged to Gary M. Lamar – Gary Ann Lamar Fitts

North Carolina Ramblers 78RPM record and Exchange Club pin – Bill Rakes

Korean War medals and photo of 40<sup>th</sup> Infantry Division – Wallace Washburn

Leaksville Orange Crush bottle – J. R. Evans

1930 photo of Leaksville High School Red Devils – Carol Gwyn

Baby scale from Dr. G. P. Dillard's office in Draper – J. C. Adkins

**THANK YOU TO ALL OF OUR WONDERFUL DONORS!!**

Eden Historical Museum  
656 Washington Street  
P.O. Box 2201  
Eden, NC 27288  
(336) 623-0773

Email: [edenhistoricalmuseum@yahoo.com](mailto:edenhistoricalmuseum@yahoo.com)

**HOURS:**  
Saturdays from 10:00 a.m. until 4:00 p.m.  
Also open during special events and by appointment for groups.

\* \* \* \* \*

**VOLUNTEERS NEEDED!!**  
*Can you spare a few hours a month on Saturdays to volunteer at the museum? Please call or send an email to let us know!*