



### GIRL SCOUT MARKER

A guest at our May meeting was Rebecca Sue Taylor of Wilmington who is writing a history of the Girl Scouts in NC for their national Centennial in 2014.

She is attempting to have a state historic marker placed in Eden to honor **Mary Flinn**, who started the first Girl Scout troop in NC right here on Nov. 28, 1914.

Unfortunately, Rebecca is having a difficult time proving that this was the date the troop was actually formed. There are numerous newspaper articles written many years after the fact, and the 1957 Leaksville Methodist Church history cites this date, but "*primary source documentation*" is needed for the marker to be approved. Church records and early newspapers have been searched with no luck.

It would certainly be a great asset for Eden to have this marker!

If anyone has any information please contact us:  
Edenpreservationsociety@yahoo.com  
or call: Julie @ 623-3853

### SPRAY CEMETERY

**Colin Clark** has been given an **honorary Student Membership** to EPS for heading up the **Spray Cemetery** cleanup for his Eagle Scout project. So far, over 40 hours of work have been completed by EPS, the Boy Scouts and the American Legion on this cemetery cleanup. **Piedmont Rentals** provided tools free of charge for the last cleanup day. There is more work to be done, but August 1<sup>st</sup> is the deadline for his Eagle Scout project. **If you can help, contact David Clay at: 427-5711.**

### Sunday, July 18<sup>th</sup> Performance

Craig "Rocky" Rockwell will portray Brigadier **General William Clark of Lewis and Clark.**

Craig has performed for a wide range of events and organizations across the country including: Lewis and Clark Bicentennial events, for schools and colleges, civic organizations and historical societies, for the US Congress in our nation's Capitol Building, in several Lewis and Clark documentary films, and even on the theme float for President Bush's second inaugural parade.

This is a **free program open to the public**, sponsored by the *Eden Preservation Society* and the *Rockingham County Historical Society.*

**Starts at 2:30 pm**  
**Leaksville United Methodist Church**  
**603 Henry Street**

### TAG SALE AND SILENT AUCTION

**THANK YOU** to everyone who helped to make the **TAG SALE AND SILENT AUCTION** in April such a huge success! We raised over \$4500, which will be used for expenses related to the Gov. Morehead Park, the Eden Historical Museum and other projects.

*Pace-Stone* was very generous in allowing us to use their warehouse to hold the event, so we owe them an especially big **THANK YOU!**

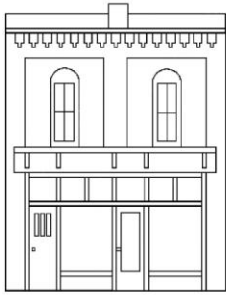
And we could not have done it all without our wonderful donors, shoppers, and hard-working volunteers!

**BY ATTENDING THE MONTHLY MEMBERS' MEETINGS,** you can be a part of the discussions and plans for the Governor Morehead Park and Morehead Mill Wall, the Superintendent's House on Carroll Street, the Eden Historical Museum, and upcoming events.



The meetings are held on the *fourth Monday of the month* at 7:00 pm at the **Eden Historical Museum**, 656 Washington Street.

**Upcoming meeting dates are:**  
**Aug 23, Sept 27, Oct 25**  
(no meeting in July)



# EDEN HISTORICAL MUSEUM

An initiative of the Eden Preservation Society

It's *hot* outside, so spend a Saturday in the museum browsing through our photo albums! You might find pictures of yourself or someone you know!

And be sure to check *Eden's Own Journal* for **Unidentified Photos** from the Harold Francis Photography Collection.

## DONATIONS

*SOME of our most recent donations include:*

-A **sterling silver platter** presented to **Gov. Luther Hodges** by Marshall Field Co. for his many years of service from 1919-1950. Donated by **Luther Hodges, Jr.**

-A beautiful **brown silk wedding dress** from 1862 was donated by **Mary Chan Lovell.**

-A **WWII Navy Uniform** that belonged to **O'Neil Bradford** was donated by **Anne Bradford.**

\*\*\*\*\*

## ARTIFACTS NEEDED

We are currently seeking donations of artifacts for our next permanent exhibits, and we need local items from pre-1940 relating to: **WWI, the Great Depression, Charlie Poole and old time music, and the mills.** We are also looking for local items from the **Korean War, the Vietnam War and Draper's history.**

### Eden Historical Museum

656 Washington Street

PO Box 2201

Eden, NC 27288

(336) 623-0773

Email: edenhistoricalmuseum@yahoo.com

### HOURS:

Saturdays from 10:00 a.m. until 4:00 p.m.

Also open during special events and by appointment.

\*\*\*

*Upcoming Washington Street Events include:*

**The Eden Cruise's - 2nd Sat. in May-Oct. 4-8 pm**

**Bringing the Beach Downtown - Fri., July 30, 5-8 pm**

\*\*\*

### Grants Awarded to Museum

The museum has just been awarded grants from ***Eden Tourism Development and the Rockingham County Tourism Development Authority.*** These funds will be used to have rack cards printed for the museum. These cards will be placed in welcome centers, hotels/motels, tourist attractions, retail stores and historic sites.

We are very appreciative of their support!

\*\*\*

### Museum Visitation

Over 370 visitors have been through the museum since April, from as far away as California, Texas, Maryland, Louisiana, New Jersey, W. Virginia, Colorado, Florida, S.C., Virginia, Ohio, Pennsylvania and Georgia!

## VOLUNTEER OPPORTUNITIES

Can you spare a few hours a month to volunteer at the museum greeting patrons?

Call our Volunteer Coordinator:

Deetra Thompson, at 635-1231.

Also, we are also seeking other types of volunteer help, such as: carpentry and odd-jobs, fundraising, marketing, grant-writing, monthly housekeeping, cataloging artifacts, organizing photographs, etc.

*What skills do you have that we can benefit from?  
We'd love to have your help!*